

# How to set up Port Forwarding on New User Interface?

It is suitable for: **N100RE, N150RT, N200RE, N210RE, N300RT, N302R Plus, A3002RU**

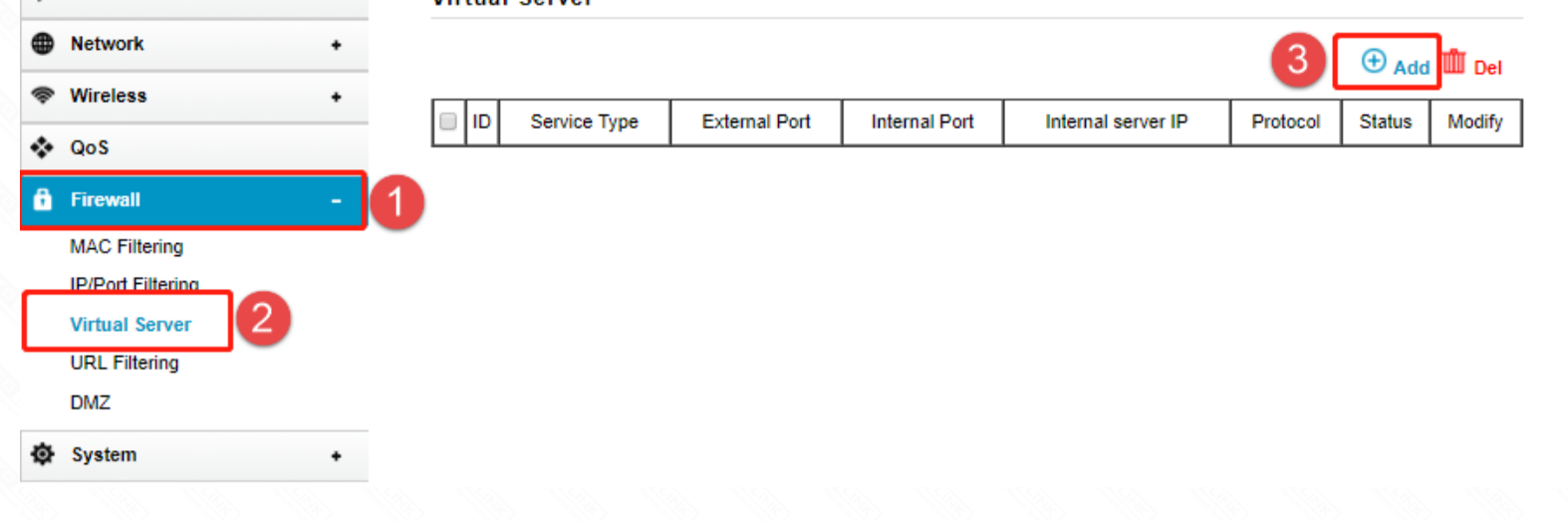
## Application introduction:

By port forwarding, the data for Internet applications can pass through the firewall of the router or gateway. This article will show you how to forward ports on your router, take N100RE as an example.

## Set up steps

### STEP-1:

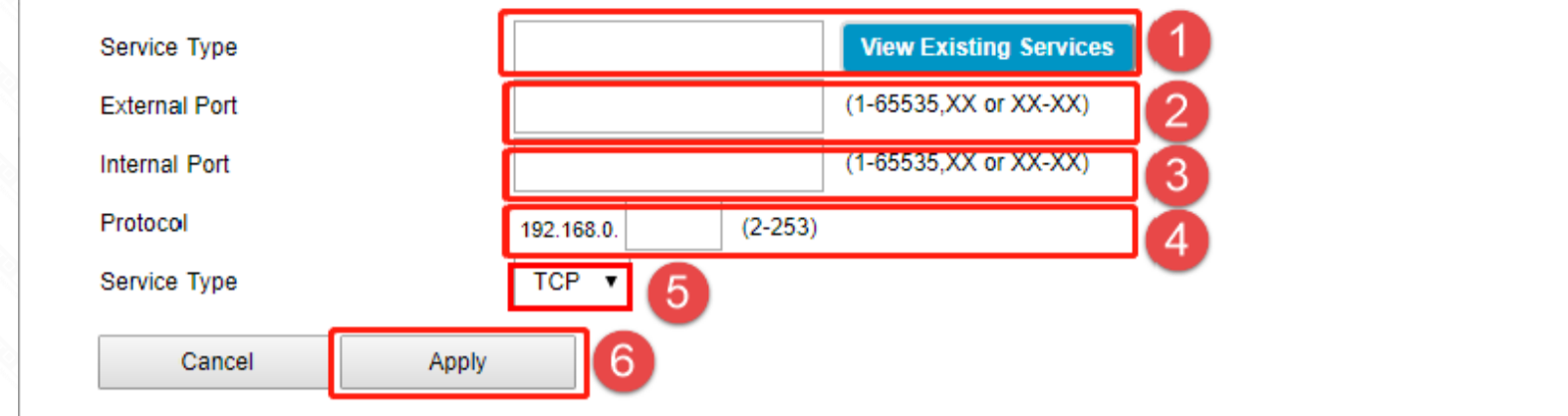
In the left menu of the web interface, click **Firewall->Virtual Server->Add**.



### STEP-2:

Choose the Rule Type from the drop-down list, and then fill in the blank as below, and then click **Apply**.

- Service Type: Click **View Existing Services**
- External Port: Port to access the server
- Internal Port: Actual port of the server
- Protocol: IP address of the server
- Service Type: Selectable by TCP, UDP, ALL



### STEP-3:

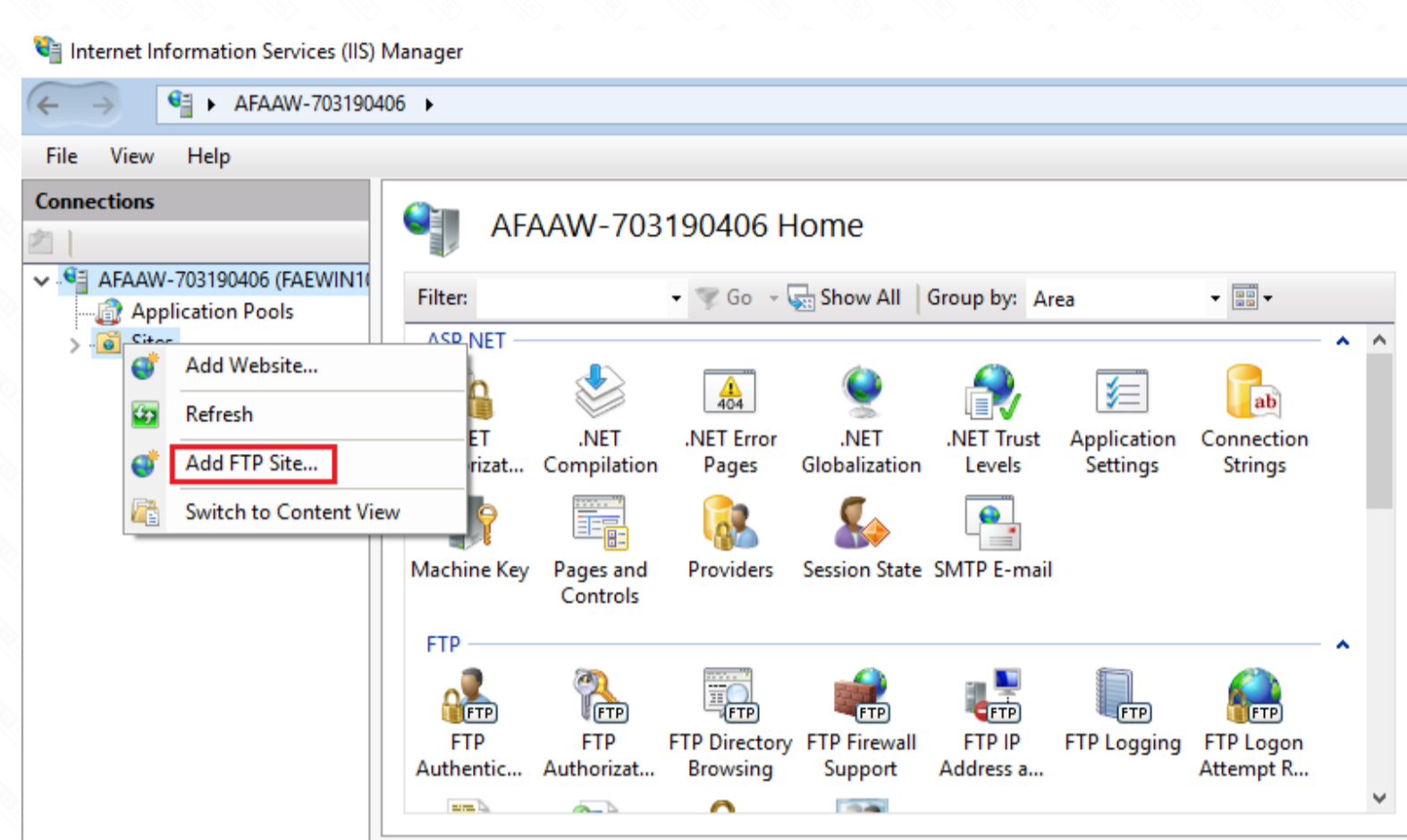
Ensure that the port successfully added to the Current Port Forwarding List.

ID	Service Type	External Port	Internal Port	Internal server IP	Protocol	Status	Modify
1	FTP	21	21	192.168.0.242	TCP	<span style="color: green;">●</span>	

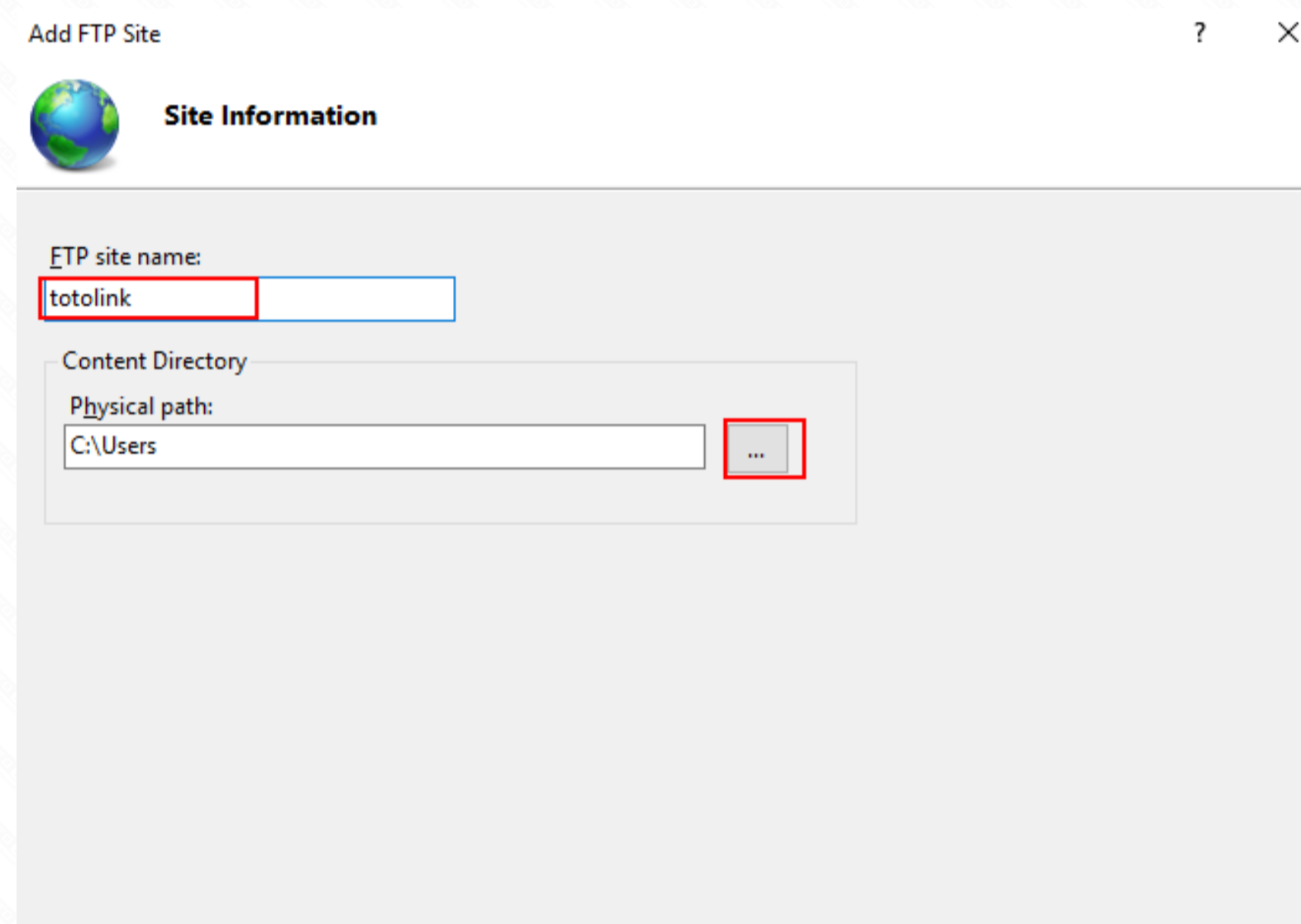
## The router's port forwarding settings are complete

Here with FTP server as an example (WIN10), check that the port forwarding is successfully.

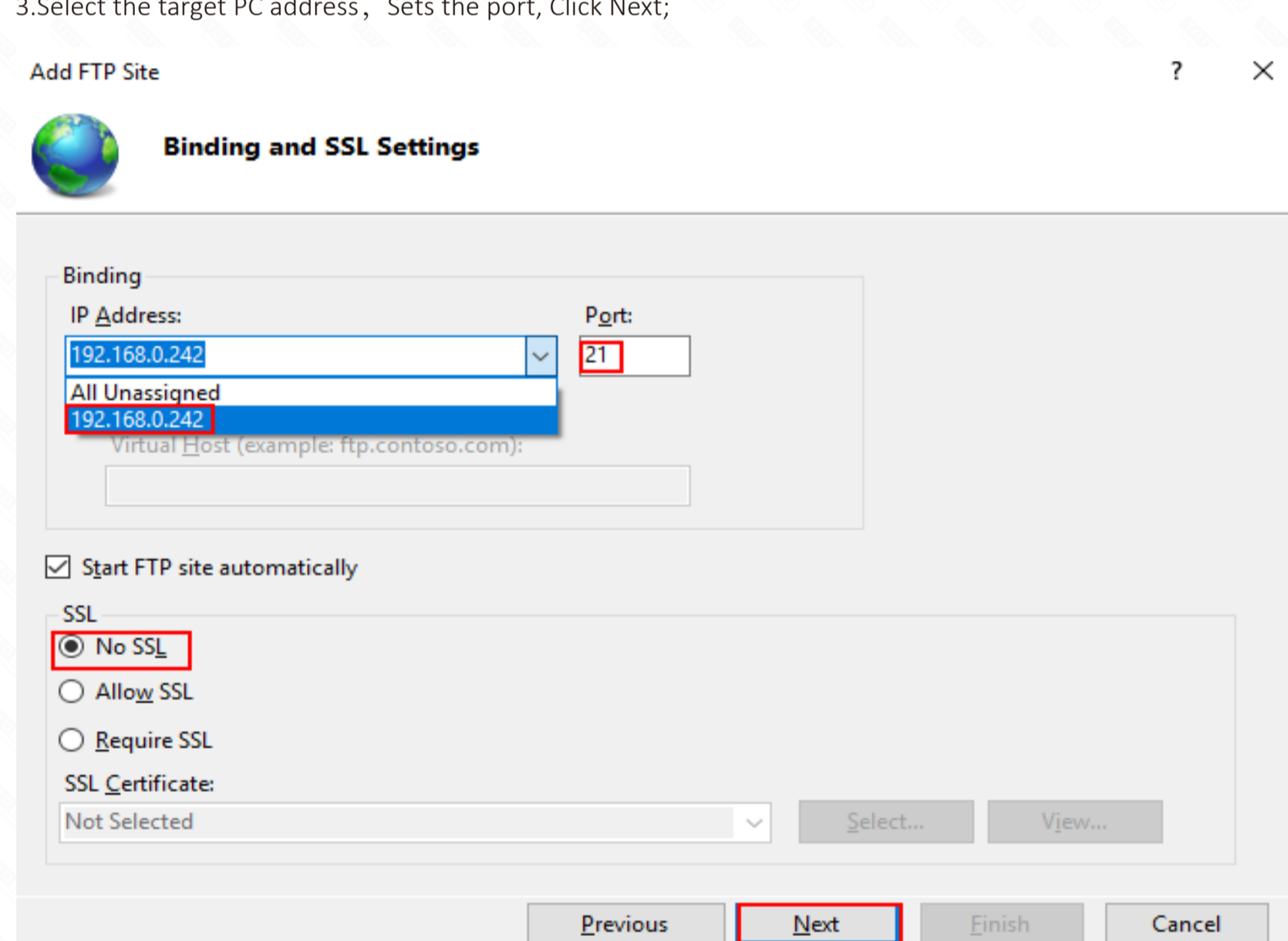
1. Open the **Control Panel\All Control Panel Items\Administrative Tools\Add FTP Server**



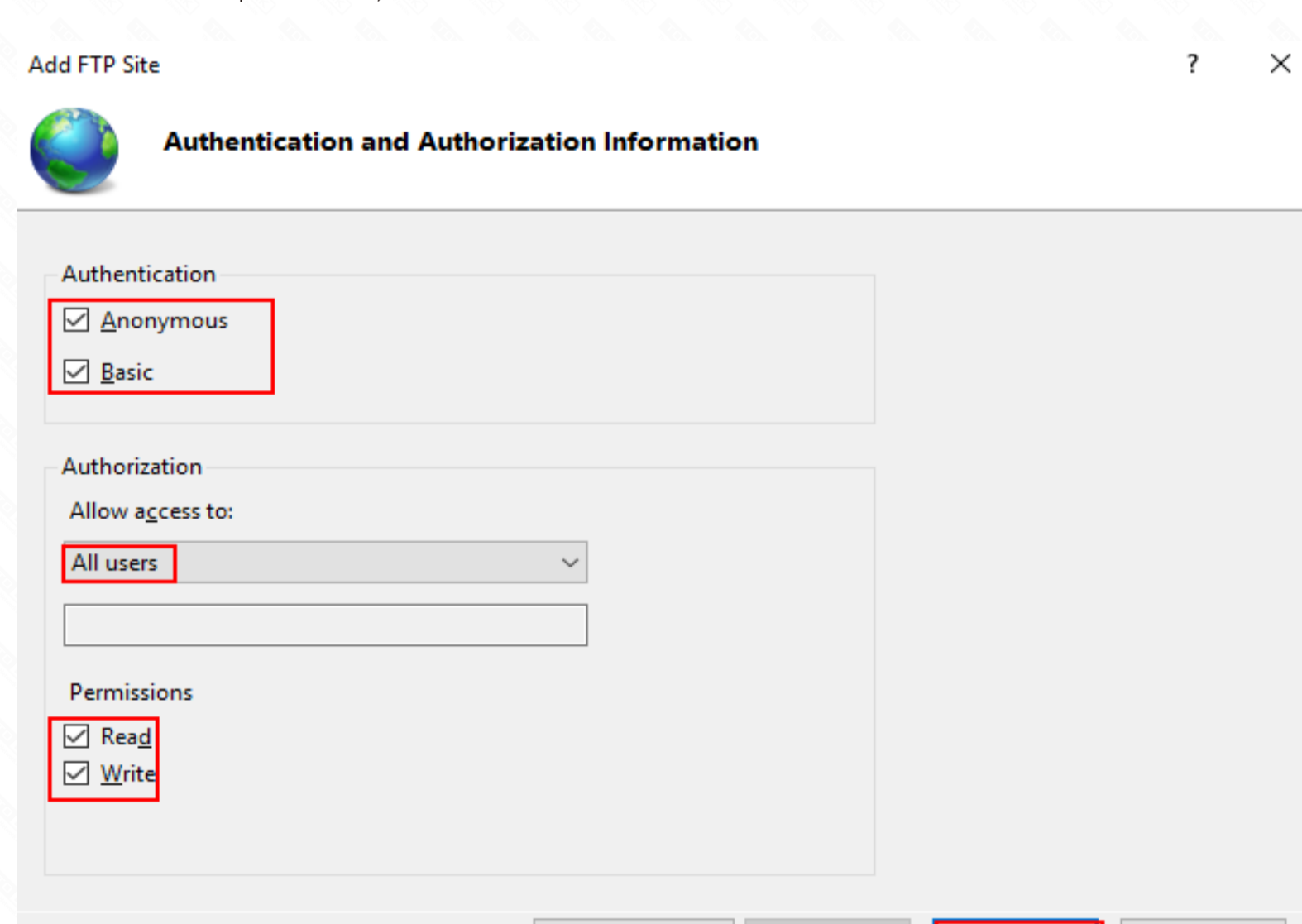
2. Input the ftp site name, Select the path; Click next



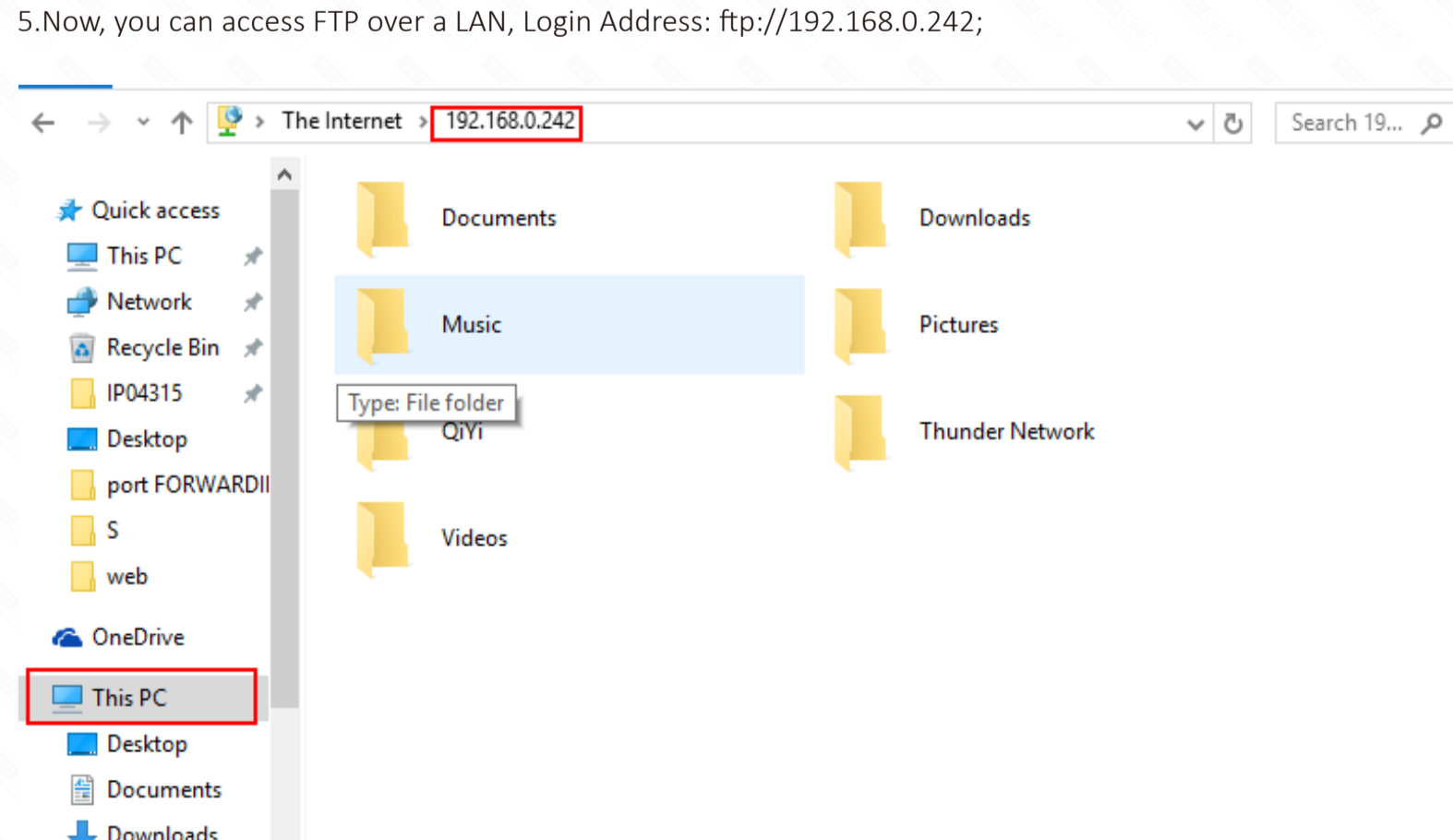
3. Select the target PC address, Sets the port, Click Next;



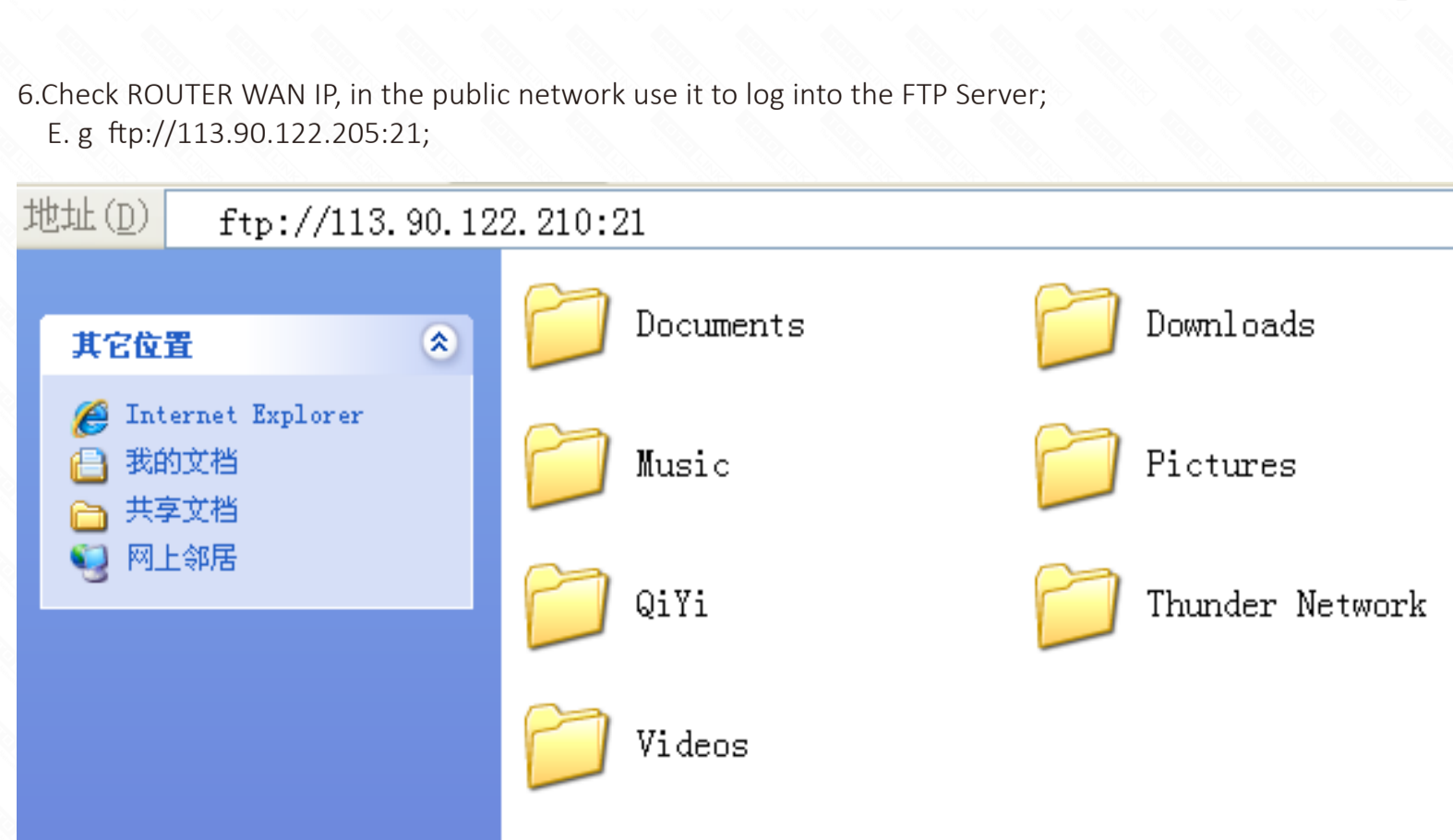
4. Define users and permissions, Click Finish.



5. Now, you can access FTP over a LAN, Login Address: ftp://192.168.0.242;



6. Check ROUTER WAN IP, in the public network use it to log into the FTP Server; E. g ftp://113.90.122.205:21;



Normal visit, verify that the port forwarding OK