



The Smartest Network Device

[www.totolink.net](http://www.totolink.net)



## 8-Port Gigabit Desktop Switch

Model No. **S808G**



10/100/1000Mbps



Auto MDI/MDIX



Low-power run  
IEE802.3az



Monitoring Use

## ➤ Overview

### 8-Port Gigabit Desktop Switch

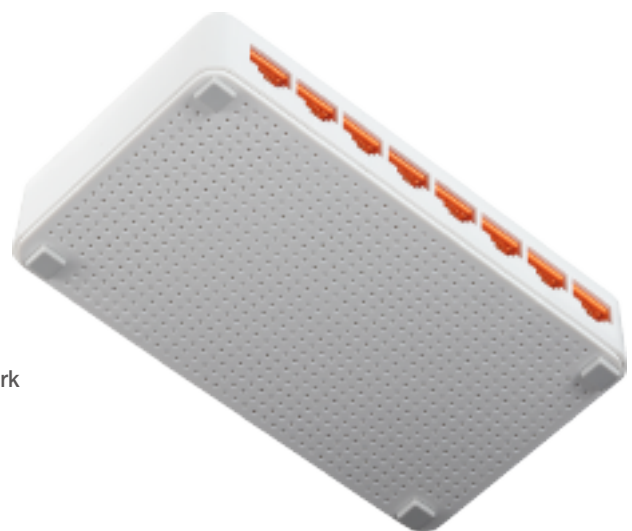
Model No. **S808G**

S808G is a Gigabit Desktop Switch that enables you to upgrade your network to gigabit Ethernet. With full gigabit ports and compact design, S808G not only increases the speed of your network server, but also make Gigabit to the desktop a reality. Generally, S808G is a high performance solution for your home or office network.



## ➤ Features

- 8 10/100/1000Mbps auto-negotiated RJ45 ports
- Supports IEEE 802.3x flow control for Full Duplex mode and backpressure for Half Duplex mode
- 4K entry MAC address table and automatic address learning
- Auto-MDI/MDIX eliminates the need for crossover cables
- Store- and-Forward Switching scheme
- Performs non-blocking full wired speed
- Supports Jumbo Frame (9KByte)
- Supports IGMP Snooping
- Supports Giga Lite to improve transfer rate for 4-wire UTP gigabit network



# Selling point

---

## ➤ Fast Ethernet Speed

S808G provides 8 10/100/1000Mbps RJ45 ports that could greatly expand network capacity and enable instant large files transferring.

All ports detect the network speed and auto-negotiate (either 10, 100, or 1000 Mbps) to provide maximum speed possible for each device connected to your network.



## ➤ Auto MDI/MDIX

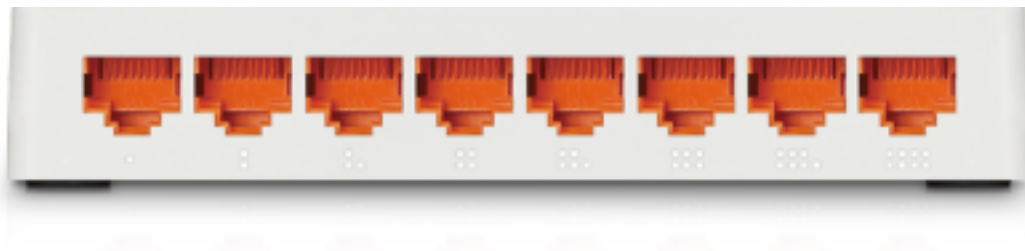
Auto MDI/MDIX function helps to figure out if the link needs a straight-through or cross-over connection automatically.

No need to worry about cable type.



## ➤ Plug and Play

No configuration required, simply plug and play for easy use. You're allowed to add up to seven devices using Ethernet cable to expand your wired home network and share high speed Internet with other members.



# Specification

## General

Standards	- IEEE 802.3, IEEE 802.3u, IEEE 802.3ab, IEEE 802.3x
Interface	- 8*10/100/1000Mbps auto-negotiation RJ-45 Ports (Auto MDI/MDIX)
Power Supply	- 9V DC/0.5A
Dimensions(L x W x H)	- 5.2 x 3.0 x 1.0 in. (132 x 75 x 25mm)
LED	- 1* Power, 8*LANs
MAC Address Learning	- Auto-learning, auto-aging
MAC Address Table	- 4K
Network Media	- 10BASE-T: UTP Cat 3, 4, 5 cable - 100BASE-TX/1000BASE-T: UTP Cat 5, 5e or above cable
Backup Bandwidth	- 16Gbps
Transmission Method	- Store-and-Forward

## Others

Package Contents	- S808G Desktop Switch *1 - Power Adapter - Ethernet Cable *1 - Quick Installation Guide *1
Environment	- Operating Temperature: 0℃~40℃ (32℉~104℉) - Storage Temperature: -40℃~70℃ (-40℉~158℉) - Operating Humidity: 10%~90% non-condensing - Storage Humidity: 5%~90% non-condensing

## ZIONCOM ( HK ) TECHNOLOGY LIMITED

Copyright 2018 ZIONCOM (HK) TECHNOLOGY CO., LTD. All Rights Reserved.

### Headquarter & R&D Center

7/F, Unit D, 4 Building Shenzhen Software Industry Base, Xuefu Road,  
Nanshan District, Shenzhen, Guangdong, China

Tel : +86-755-6136-3288 (Ext. 851) | FAX : +86-755-6136-3344

### Factory

Building A1 & A2 Lantian Technology Park, Xinyu Road, Xinqiao Henggang Block,  
Shajing Street, Baoan District, Shenzhen, Guangdong, China

Direct Line : +86-755-6136-3395 | FAX : +86-755-6136-3322

# S808G

## 8-Port Gigabit Desktop Switch